



Specification

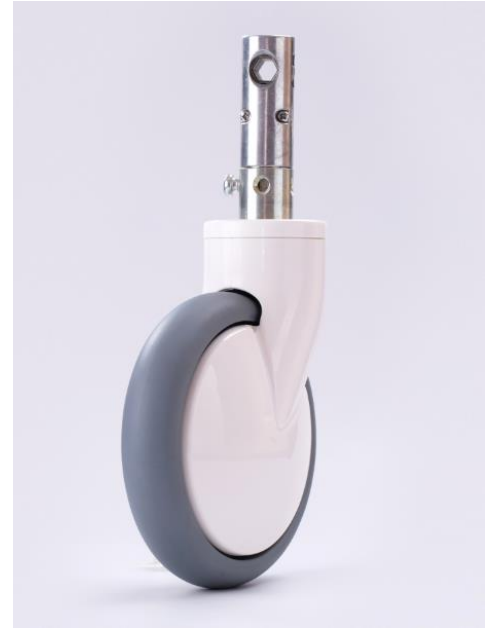
A150C-WG-D28X96-2D45

150mm 2D Central Locking Twin Caster

Caster with total lock and free Functions.

Housing and wheel core made of Nylon-PA6. High load-bearing capacity TPU wheel tread assures of quiet and stable rolling.

Apply to the stem with cam hole.



Technical Data

Wheel Diameter	150mm
Caster Width	64mm
Tread Width	32mm
Stem Diameter	28mm
Stem Length	96mm
Offset	40mm
Swivel Radius	115mm
Swivel Interference	230mm
Overall Height	185mm
Temperature	-30/+80°C
Standard	EN12531
Weight	1.25KG
Dynamic Load Capacity	120KG
Static Load Capacity	150KG

